



NEVER STOP ELEVATING
YOUR VET EXPERIENCE.

MYLAB™ VET PRODUCT LINE

MyLab™ X8VET DESIGNED TO BE UNIQUE

A new era of ultrasound is here: new system software helps you to accelerate your workflow by setting customizable options.

Attain immediate results, and exploit all features of the vet-dedicated platform.



NEVER STOP ELEVATING YOUR VET EXPERIENCE.





Italian design
www.esaote.com

MyLabX8TM VET



Dedicated VET software and probes



Windows® 10



Easy to move



Zero-click technology



Microvascularization detection with microV



Quick start-up



Full-screen visualization

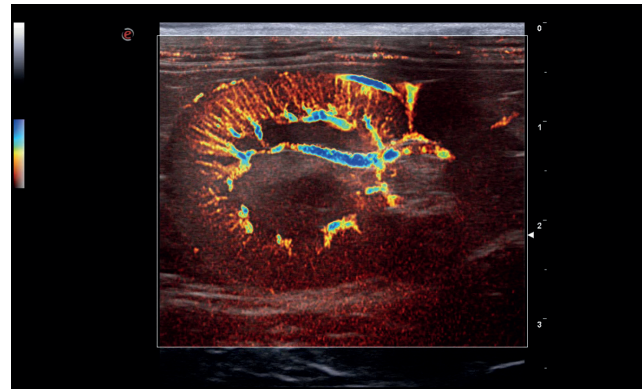


Highly responsive capacitive touchscreen

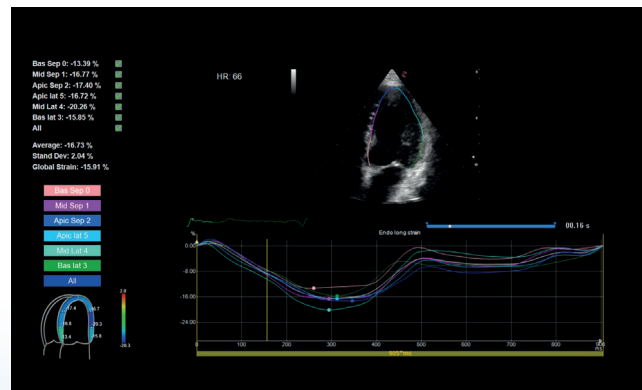


Esaote S.p.A. - sole-shareholder company
Via Enrico Melen 77, 16152 Genova, ITALY, Tel. +39 010 6547 1, Fax +39 010 6547 275, info@esaote.com

Windows® is a registered trademark of Microsoft Corporation. MyLab is a trademark of Esaote spa.
Technology and features are system/configuration dependent. Specifications subject to change without notice. Information might refer to products or modalities not yet approved in all countries.
Product images are for illustrative purposes only. For further details, please contact your Esaote sales representative.



Cat - Kidney cortex - microV



Dog - Heart - Strain calculation

- **24 MHz probe** with high-resolution images
- **XStrain™** - endocardial velocity quantification & heart deformation detection
- **Zero-click EF** - automatic ejection fraction computation
- **ElaXto** - non-invasive assessment of tissue elasticity
- **CnTI™** - advanced technology for Contrast Enhanced Ultrasound (CEUS) imaging
- **QPack** - multimodality quantification tool for CnTI™, Color & Power Doppler
- **Needle enhancement** - a valuable aid to interventional practice
- **easyMode* and easyColor*** - "one-touch" image optimization through intelligent real-time algorithms
- **Up to 5 probe connection ports** - enabling fast probe switch to adapt to the most demanding clinical environments
- **On-board battery**** - enabling an autonomous cart base

* patent pending
** optional

160000180MA Ver.02

NEVER STOP ELEVATING YOUR VET EXPERIENCE.